

INNOVATION LEADS TO VALUE



SWE 240FE

MEDIUM EXCAVATOR

◆ Total weight: 23.36 t

◆ Engine power: 132 kW

◆ Bucket capacity: 1.0 m³



- ◆ Advanced frequency conversion drive control technology, multi-bus and Ethernet communication technology and battery integrated management system control technology are used.
- ◆ The two-stage heating mode makes it possible to start the normal operation of the battery motor by heating even in extremely cold temperatures, which is more applicable to various environments.
- ◆ In the integrated heat dissipation mode, the hydraulic oil and motor are integrated, and the cabin air conditioning and battery heat dissipation are integrated, to adjust the heat dissipation energy and reduce energy consumption according to the ambient temperature automatically.
- ◆ Intelligent and unmanned operations can be realized by installing intelligent remote control devices, which reduces the danger and intensity of manpower for a wider range of applications.

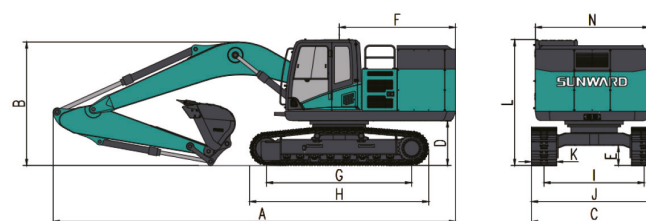
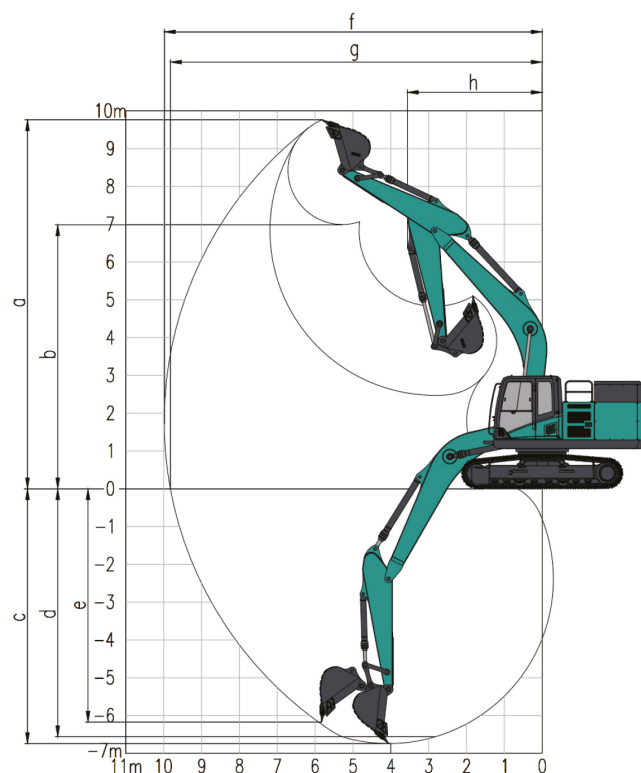


Parameters and performance of the main machine

Working weight		kg	23 360
Standard bucket capacity		m³	1
Bucket digging Force		kN	158.8
Arm digging Force		kN	135.4
Max. traction		kN	201.5
Max climbing angle		%	30
Ground Pressure		kPa	51
Travel Speed (Max/Min)		km/h	3.08 / 4.94
Slewing speed		rpm	10.6
Engine	Brand		/
	Model		/
	Power	kw/rpm	132
	Displacement	L	/
Fuel tank capacity		L	/
Hydraulic oil tank capacity		L	300

Working range

	Boom length	mm	5 700
	Arm length	mm	2 920
a	Max. digging height	mm	9 698
b	Max. dumping height	mm	6 921
c	Max. digging depth	mm	6 750
d	Digging depth (2.44m; horizontal)	mm	6 560
e	Max. vertical digging depth	mm	6 175
f	Max. digging radius	mm	9 965
g	Max. digging reach at ground level	mm	9 805
h	Min. front slewing radius	mm	3 560
i	Max. height of Dozer blade	mm	/
j	Max. digging reach of Dozer blade	mm	/



Outline dimensions

A	Total length	mm	9 928	H	Track length	mm	4 257
B	Total height	mm	3 122	I	Shoe distance	mm	2 384
C	Total width	mm	2 984	J	Track width	mm	2 984
D	Counterweight Clearance	mm	1 052	K	Shoe Width	mm	600
E	Chassis ground clearance	mm	478	L	Max. height of total machine	mm	2 978
F	Tail slewing radius	mm	3 145	N	Swing width	mm	2 700
G	Track length on the ground	mm	3 470				

◆ The above parameters may be different due to product upgrading.

