

INNOVATION LEADS TO VALUE



# SWE 215F MEDIUM EXCAVATOR

◆ Total weight: 21.8t

◆ Engine power: 129kW/2200rpm

◆ Bucket capacity: 1.0m<sup>3</sup>

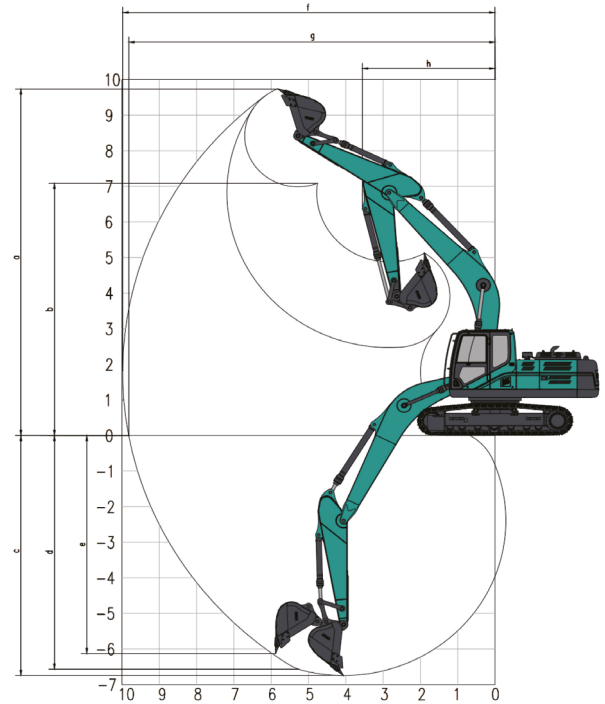


- ◆ It is equipped with Cummins 129KW engine with high power and no speed loss; and the radiator area has been increased by 27% without the need to worry about high temperature.
- ◆ 130CC large-displacement main pump is used, and positive flow large-diameter main valve is used to ensure small power loss, precise control, faster action response, and higher energy-saving. The whole vehicle has good maneuverability and smooth action.
- ◆ It is equipped with full-featured hydraulic lines as standard that are applicable to various accessories.
- ◆ Raised box large size X-type walking frame is used with excellent torsion resistance. The seat forging is also forged with high reliability. The seat diameter has been increased by 5%, which is the largest in the industry among the same capacity products. The load-bearing capacity and stability are good. Lower vehicle sealing plate is installed to protect hydraulic pipelines and ensure worry-free movement.
- ◆ It has a new style and colors. Two-stage handrails and full-channel anti-slipping plates are installed to ensure personal safety. 6 lamps and 2 cameras are used as standard for better sight during operation.
- ◆ The sedan-class cabin is equipped with 10-inch touch display with one-key start, blue tooth communication and other intelligent functions. Air suspension seat with waist support adjustment, seat expansion and seat tilting functions are installed to ensure the comfort of the driver during operations on slopes. In addition, seat with heating and ventilation functions could also be selected.



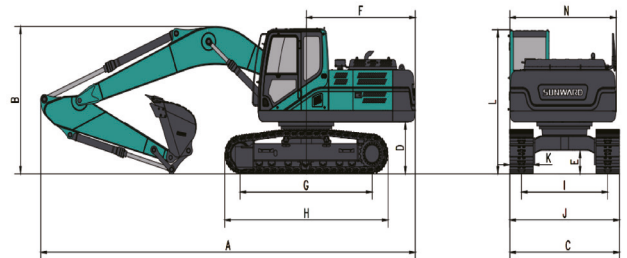
## Parameters and performance of the main machine

Weight of whole machine		kg	21800
Standard bucket capacity		m³	1
Bucket digging force		kN	155
Arm digging force		kN	110
Max. drawbar pull		kN	193
Gradeability		%	70
Ground Pressure		kPa	47.06
Travel Speed(Max/Min)		km/h	5.2/3.3
Swing speed		rpm	11.8
Engine	Brand		Cummins
	Model		B6.7
	Power	kw/rpm	129/2200
	Max torque	N.m/rpm	881/1300
	Displacement	L	6.7
Fuel tank capacity		L	400
Hydraulic oil tank capacity		L	300



## Working range

	Boom length	mm	5700
	Arm length	mm	2920
a	Max. digging height	mm	9745
b	Max. dumping height	mm	6980
c	Max. digging depth	mm	6635
d	Digging depth (2.44m; horizontal)	mm	6460
e	Max. vertical digging depth	mm	6050
f	Max. digging reach	mm	9915
g	Max. digging reach at ground level	mm	9745
h	Min. front slewing radius	mm	3530



## Outline dimensions

A	Total length	mm	9560	H	Total track length	mm	4260
B	Total height	mm	3150	I	Track gauge	mm	2200
C	Total width	mm	2800	J	Track width	mm	2800
D	Counterweight Clearance	mm	1070	K	Shoe width	mm	600
E	Chassis ground clearance	mm	480	L	Max height of total machine	mm	2990
F	Tail slewing radius	mm	2880	N	Upper-carriage width		2710
G	Track length on the ground	mm	3465				

◆ The above parameters may be different due to product upgrading.

